

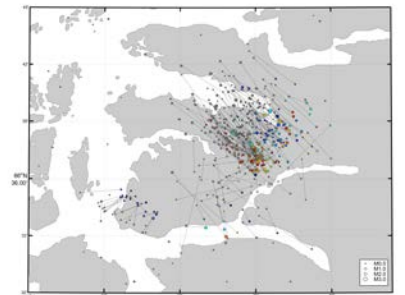
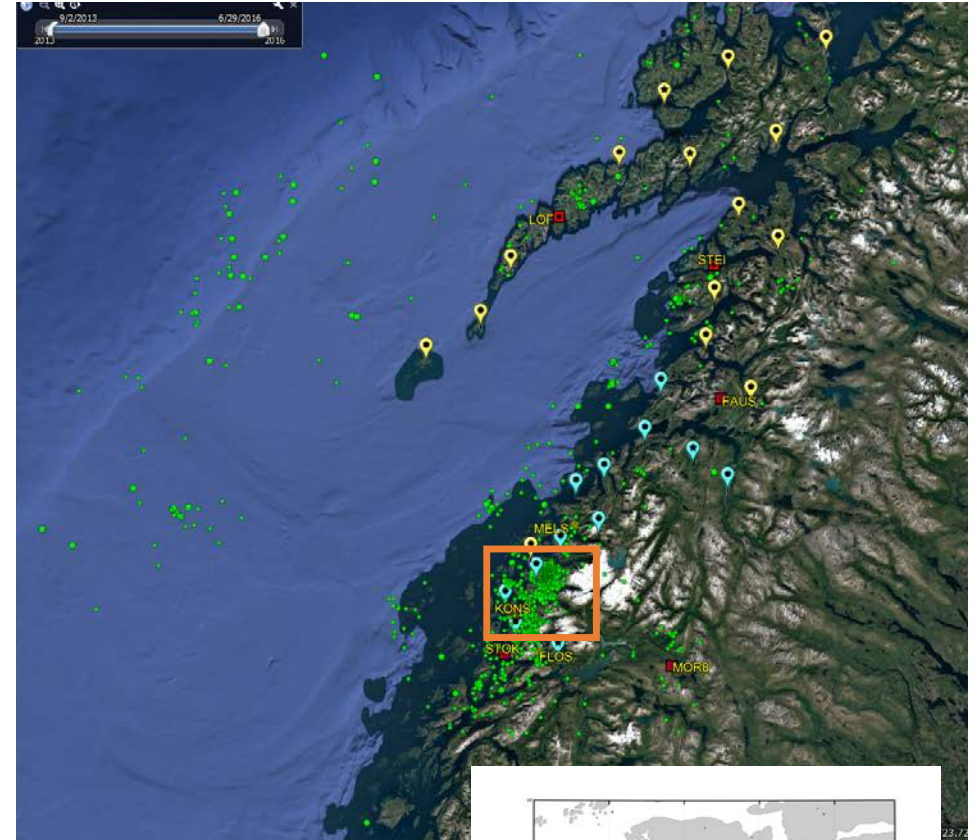
# Research plans?

Jan Michalek

University of Bergen

# Research activities

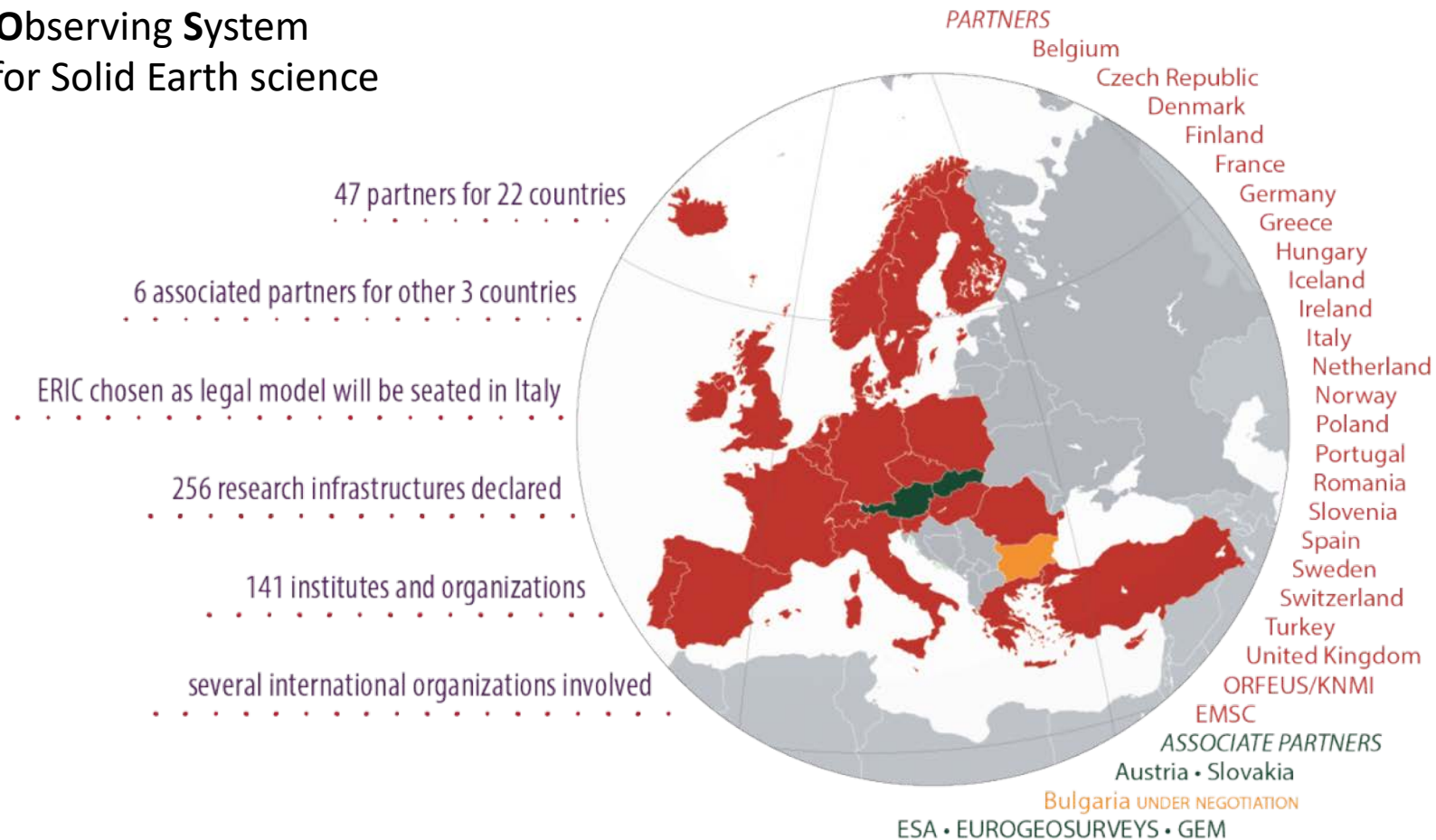
- MSc. (2006) Applied Geophysics
- PhD. (2014) Seismology
  - Source parameters of microearthquakes ( $M < 3.5$ ) in West Bohemia, Iceland
- PostDoc (2014-2016) – NEONOR2 =>
- Since 2016: EPOS-N project
  - Seismic data integration
  - Installation of new stations in the Arctic
  - EPOS-IP – cross-domain communication



# EPOS-IP

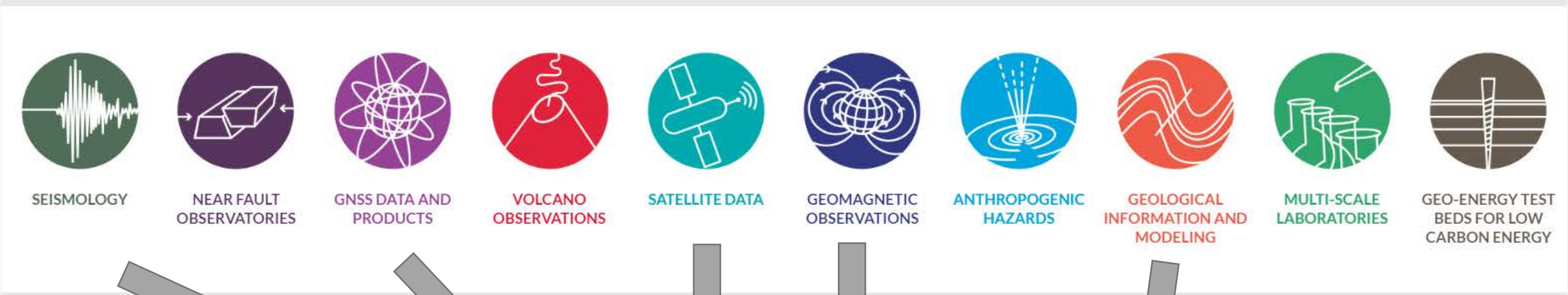
[www.epos-ip.org](http://www.epos-ip.org)

European Plate Observing System  
- infrastructure for Solid Earth science



# EPOS-IP

## EPOS THEMATIC CORE SERVICES

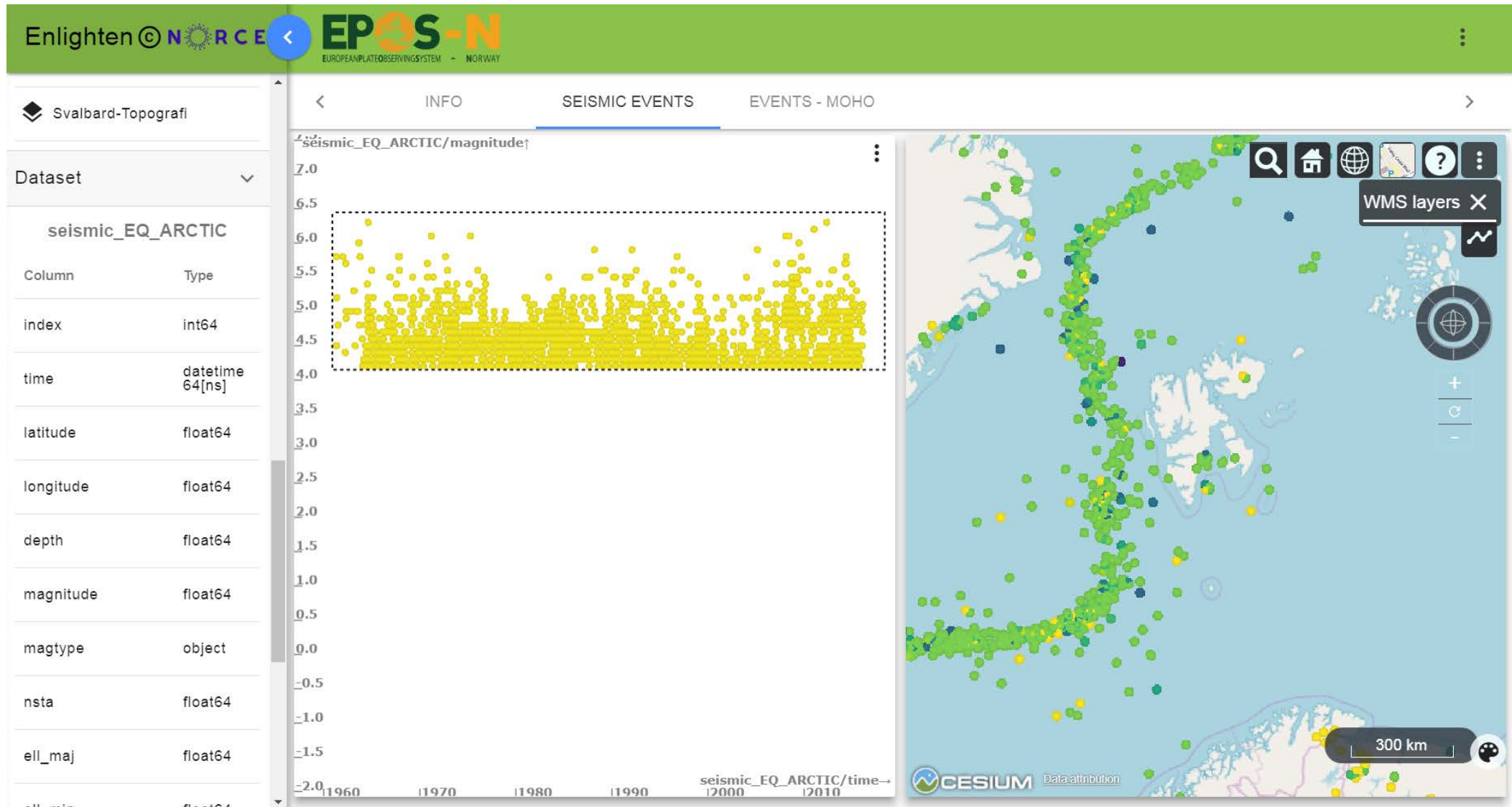


**EPOS-Norway**

implementation as interoperable services towards EPOS-IP

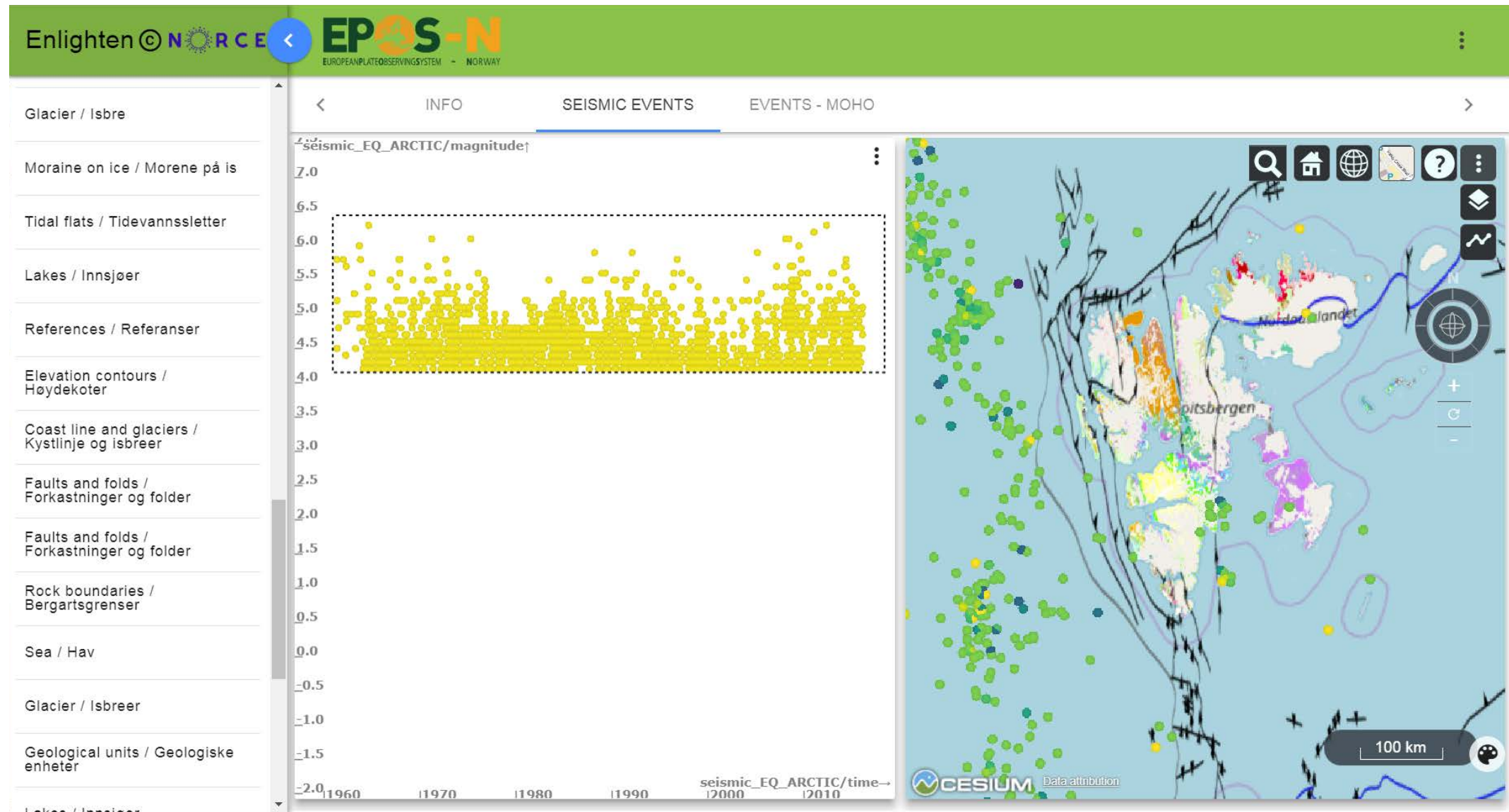
**EPOS-N portal => Enlighten-Web**

# EPOS-N Enlighten-Web

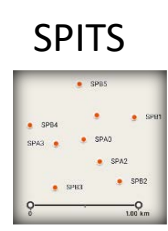
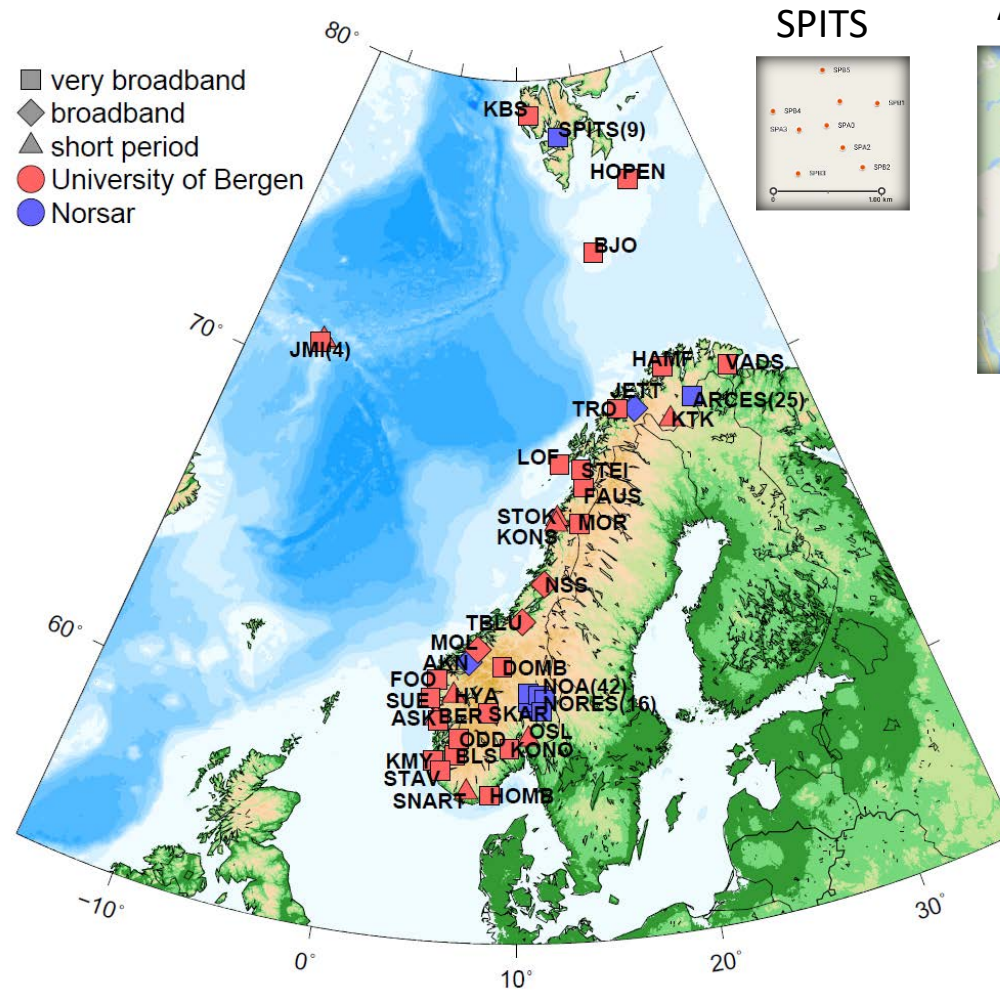




# EPOS-N Enlighten-Web

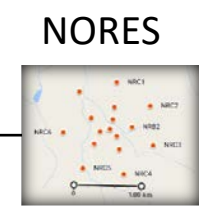
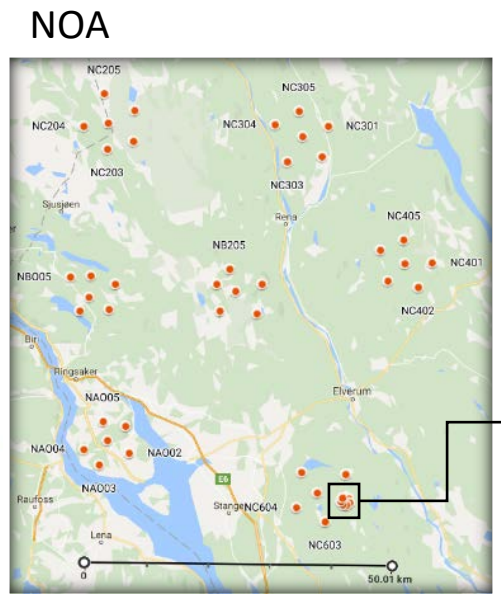


# Seismic networks in Norway (current status)



Seismic stations:  
 39 single stations (34 UIB)  
92 array stations (in 4 arrays)  
 131 sensors in total

New in EPOS-N:  
 14 + 5





# New installations in Arctic (seismic+geodetic)

Scouting in Aug 2017





# My plans for the UAK workshop

- Learn about multi-disciplinary use cases for further development of visualization tools (EPOS-N, EPOS-IP)
- Collect feedback about Enlighten-Web tool
- Discuss common efforts/experiences with getting permission for installation of monitoring stations in Svalbard
  - 6 seismic + geodetic stations – application rejected twice already!
  - Strict rules for protection nature or «look of wild life»
  - Move from research infrastructure category to life-supporting infrastructure category?