



UNIVERSITY OF
CALGARY

CO₂ fluxes in a lake – river – coastal ocean continuum

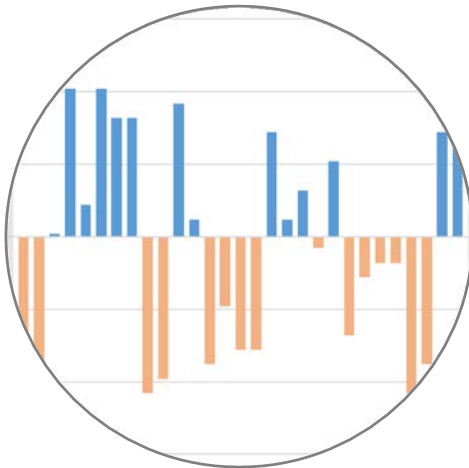
Samantha Jones

PhD Student, Department of Geography
University of Calgary

Supervisor: Dr. Brent Else

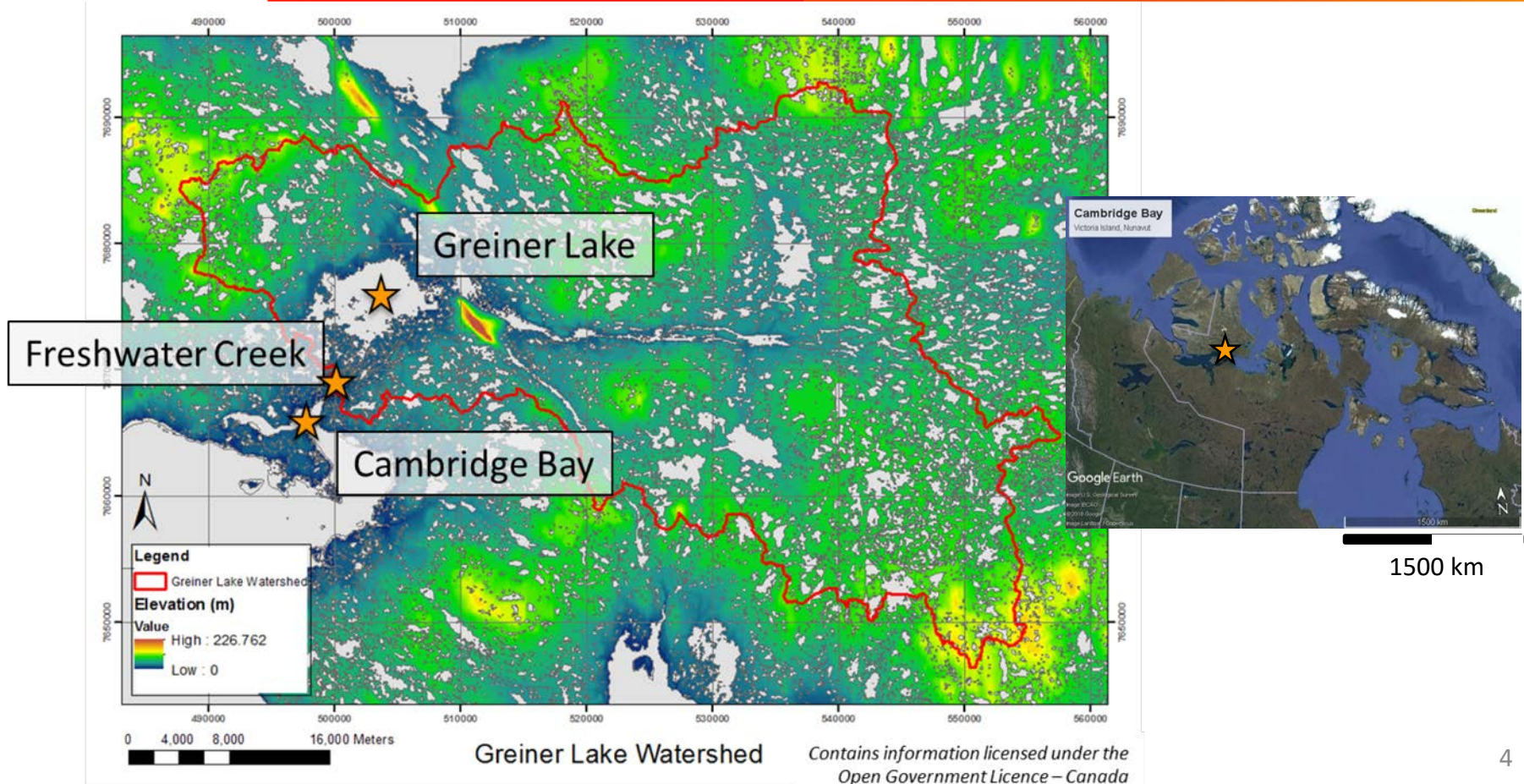
December 3, 2018

UNIS, Longyearbyen, Svalbard



My Research

Quantify **inorganic carbon fluxes** in three environments (lake, river, coastal ocean), **investigate linkages and feedbacks** between the environments, and **identify vulnerabilities** to future change.



Baseline

Framework

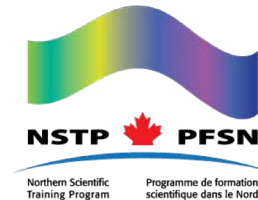
Constraint

Analogue

- How are the waterbodies important?
- Have the waterbodies changed?
 - What have you noticed?
- How does the break-up process unfold?
 - Is this relevant to you?
- What matters the most?
 - What questions do you have?

Email: samantha.jones3@ucalgary.ca

Twitter: @jones_yyc



Arctic Research Foundation • Polar Knowledge Canada • The Hamlet of Cambridge Bay
Nunavut Arctic College • Ekaluktutiak Hunters & Trappers Organization • Patrick Duke
Araleigh Cranch • Shawn Marriott • Francis Emingak • Sofia Ahmed • Cara Manning
Brian Moorman • Ann-Lise Norman • University Centre in Svalbard (UNIS)
Nansen Environmental and Remote Sensing Center